

TENDER BULLETIN

NO. 44 2016/17 FY

03 MARCH 2017



LIMPOPO

PROVINCIAL GOVERNMENT
REPUBLIC OF SOUTH AFRICA

This document is also available on the internet on the following website:

www.limtreasury.gov.za

Provincial Supply Chain Management Office

TABLE OF CONTENTS

	Page No.
1. REPORTING FRAUDULENT AND CORRUPT ACTIVITIES.....	03
2. INSTRUCTIONS.....	04
3. BID INVITATIONS FOR SUPPLIES, SERVICES AND DISPOSALS.....	05-07
4. SPECIAL NOTICES.....	08-10
ANNEXURE 1: ADDRESS LIST AND CONTACT DETAILS: PROVINCIAL DEPARTMENTS.....	11
ANNEXURE 2: ADDRESS LIST AND CONTACT DETAILS: PUBLIC ENTITIES.....	12
ANNEXURE 3: ADDRESS LIST AND CONTACT DETAILS: PROVINCIAL TREASURY TENDER ADVISE CENTRES	13
ANNEXURE 4: ADDRESS LIST AND CONTACT DETAILS: SATELLITE OFFICES	14

REPORT

FRAUDULENT & CORRUPT ACTIVITIES ON GOVERNMENT PROCUREMENT SYSTEM

National Anti-Corruption @ 0800 701 701

Security and Investigating Services – Limpopo Provincial Treasury @ 015 298 7196

ALL COMPLAINTS/CONCERNS RELATED TO SCM NON-COMPLIANCE MUST BE REPORTED TO:

LIMPOPO PROVINCIAL TREASURY

PRIVATE BAG X 9486

POLOKWANE

0700

PROVINCIAL TREASURY, FINANCE HOUSE, 56 – 58 PAUL KRUGER STREET, POLOKWANE

2. INSTRUCTIONS

1. Bidders are advised to read the entire tender bulletin.
2. Tenders for procurement of supplies, services and disposals are categorized as follows:

SUPPLIES

- Accommodation, leasing of
- Audio visual equipment
- Building material
- Chemicals: Agricultural/Forestry/
- Laboratory/Water Care
- Clothing/Textiles
- Computer equipment
- Computer software
- Electrical equipment
- Electronic equipment
- Furniture
- General
- Medical
- Office equipment: Labour-saving devices
- Perishable provisions
- Stationary/printing
- Steel
- Timber
- Vehicle (all types)
- Workshop equipment

SERVICES

- Building
- Civil
- Electrical
- Functional (including cleaning-, and security services)
- General
- Maintenance of electrical, mechanical equipment and plumbing
- Mechanical
- Professional
- Repair and maintenance of vehicles
- Transport

DISPOSALS

- Clothing and textiles
- Furniture
- General
- Scrap metal
- Vehicles

3. Bid documents are generally available in English only.
4. The address where a bid document is available from and where it must be submitted to may differ.
5. The addresses at which bid documents may be obtained and to which tenders must be posted, appear in Annexure 1.
6. The address list of various Supply Chain Management Advice Centres at which bid documents and tender bulletins may also be obtained, appear in Annexure 3; and
7. The address list of Supply Chain Management satellite offices at which tender bulletins may also be obtained, appear in Annexure 4.

3. BID INVITATIONS FOR SUPPLIES, SERVICES AND DISPOSALS

BID NO.	DESCRIPTION OF SERVICE OR SUPPLIES	CONTACT DETAILS	BID DOCUMENT PRICE (NON-REFUNDABLE)	DUE AT 11H00	BID DOCUMENTS OBTAINABLE FROM	POST OR DELIVER BIDS TO
					See Annexure 1 & 2, Page 11 & 12	

RAL/E912 /2017	A panel of Environmental Management Consulting Service Providers for a period of three (3) years Road Agency Limpopo	ADMINISTRATION PROCESS Mr Matsobane Dinala at 015 284 4628 or 0824650812 and by email is DinalaMR@ral.co.za TECHNICAL ASPECTS S Tshivhase @ Tel No: 015 284 4646 Cell No: 082 441 5330 e-mail: tshivhasesp@ral.co.za	R80-00	28/03/2017	116	116
RAL/H913 /2017	A Panel of Safety Consulting Service Providers for a period of three (3) years	ADMINISTRATION PROCESS Mr Matsobane Dinala at 015 284 4628 or 0824650812 and by email is DinalaMR@ral.co.za	R80-00	28/03/2017	116	116

	Road Agency Limpopo	<p>TECHNICAL ASPECTS Ms. S Tshivhase @ Tel No: 015 284 4646 Cell No: 082 441 5330 e-mail: tshivhasesp@ral.co.za</p>				
RAL/2017 / Off-Site Replication/ RFB001	<p>Appointment of service provider to provide Off-Site Replication Services and Disaster Recovery for the Virtual Server Environment for a period of three (3) years</p> <p>Road Agency Limpopo</p>	<p>ADMINISTRATION PROCESS Mr Matsobane Dinala @ Tel:015 284 4628 or Cell:0824650812 and Email :DinalaMR@ral.co.za</p> <p>TECHNICAL ASPECTS Mr. R Aucamp @ Tel: 015 284 46423 or Cell: 082 294 3960 Email: Ruan@ral.co.za</p>	R80-00	24/03/2017	116	116
RAL/T539 C/2016	<p>Upgrading of (gravel to bituminous surface) Road D4370 from Ntombi Seleka to Mogaladi to Phokwane in Makhudumathamakga Local Municipality in the Sekhukhune District of Limpopo Province</p> <p>Compulsory Briefing session: Date:14 March 2017 Venue: Junction of Road D4100 and D4370; co-ordinates S 24 48'19.1"E29 28'14.8" Time:11H00: Road Agency Limpopo</p>	<p>ADMINISTRATION PROCESS Mr Matsobane Dinala at Tel: 015 284 4628 or Cell:0824650812 and Email:DinalaMR@ral.co.za</p> <p>TECHNICAL ASPECTS Mr. M Shongwe @ Tel: 012 809 9800 or Cell: 076 662 1753 Email: info@bluhray.co.za</p>	R330-00	28/03/2017	116	116
RAL/T857 /2016	<p>Upgrading of (gravel to bituminous surface) of Road D4200 from Marulaneng to Maila to Mphanama to Nchabeleng within the boundries of Makhudumathamakga and Fetagomo Local Municipality in the</p>	<p>ADMINISTRATION PROCESS Mr Matsobane Dinala at 015 284 4628 or</p>	R500-00	07/04/2017	116	116

	<p>Sekhukhune District of Limpopo Province</p> <p>Compulsory Briefing session:</p> <p>Date: 15 March 2017 Venue: T-Junction of road D4200 (Mphanama to Nchabeleng) and Road D42552(Mphanama to Ga-Mashabela Road) GPS co-ordinates S 24 35'12.00"S and 29 48' 56.52" E Time: 101H00:</p> <p>Road Agency Limpopo</p>	<p>0824650812 and by email is DinalaMR@ral.co.za</p> <p>TECHNICAL ASPECTS</p> <p>Mr. Less Sekukhune @ Cell: 083 440 7697 Email: sekhukhune@mweb.co.za</p>				
<p>DSDP 43/17</p>	<p>Provision of Training for Masupa-Tsela Youth Pioneers on Community Development NQF Level 5 Certificate: Period 01 May 2017 to 31 October 2018</p> <p>Compulsory Briefing Session:</p> <p>Date: 15th of March 2017 Venue: Main-Boardroom of the Department of Social Development, 02nd Floor, 21 Biccard Street in Polokwane Time: 09h00</p> <p>Social Development</p>	<p>ADMINISTRATION</p> <p>PROCESS</p> <p>MH Mamabolo or NP Thobejane @ Tel: (015) 230 4356 / 082 829 5372 and (015) 230 4440 / 081 303 4207 Fax: (015) 291 2226 E-mail MamaboloH@dsd.limpopo.gov.za ThobejaneP@dsd.limpopo.gov.za</p> <p>TECHNICAL ASPECTS</p> <p>KM Mathagu @ Tel: 015 230 4371 or Cell: 079 493 4444 Email: MathaguKM@dsd.limpopo.gov.za MM Hlophe @ Tel: (015) 230 4317 Fax: 015 291 2226 E-mail Hlophem@dsd.limpopo.gov.za</p>	<p>R80-00</p>	<p>04/04/2017</p>	<p>100</p>	<p>100</p>

4. SPECIAL NOTICES

**4.1 (SCM Advice Centers): LIMPOPO PROVINCIAL TREASURY
ADVERTISEMENTS OF LIMPOPO CSD CALL CENTRE LINES FOR SUPPLIERS IN THE TENDER BULLETIN:-**

LIMPOPO CSD CALL CENTRE LINES FOR SUPPLIERS

DISTRICT	CALL CENTRE NUMBER	OFFICIAL RESPONSIBLE	TIME
Capricorn	015 291 8737	Mr.Holeni TI	07H30 TO 16H30
Mopani	015 812 0256	Ms. Nxumalo P	07H30 TO 16H30
Sekhukhune	013 265 0171	Mrs Morena MM	07H30 TO 16H30
Vhembe	015 962 0014	Mrs. Nefolovhodwe MQ	07H30 TO 16H30
Waterberg	014 717 1376	Mrs. Tsatsi AT	07H30 TO 16H30

4.2. PPPFA REGULATIONS ROADSHOW AS PER DISTRICT:-

4.2.1 CAPRICORN SUPPLY CHAIN MANAGEMENT ADVICE CENTRE
(PPPFA Regulations Roadshow program)

DATE	MUNICIPALITY	VENUE	TARGET	TIME
09/03/2017	Lepelle Nkumpi	Lebowakgomo Go. Building Complex	SUPPLIERS	10H00
16/03/2017	Molemole	Mogodi Ga-Manthatha Tribal Authority	SUPPLIERS	10H00
13/03/2017	Polokwane	Polokwane Hospital	SUPPLIERS	10H00

For more information please contact Ms Masindi MM at Tel.015 291 8424

4.2.2 MOPANI SUPPLY CHAIN MANAGEMENT ADVICE CENTRE
(PPPFA Regulations Roadshow program)

DATE	MUNICIPALITY	VENUE	TARGET	TIME
16/03/2017	Giyani	Giyani Parliamentary Hall	SUPPLIERS	10H00
07/03/2017	Maruleng	Hlohlokwe Com Hall	SUPPLIERS	10H00
09/03/2017	Ba-Phalaborwa	Namakgale Com.Hall	SUPPLIERS	10H00
14/03/2017	Greater Tzaneen	Nkowa-Nkowa	SUPPLIERS	10H00
16/03/2017	Greater Letaba	SASKO COM Hall	SUPPLIERS	10H00

For more information please contact Mr Mbedzi MB at Tel.015 812 0149

4.2.3 SEKHUKHUNE SUPPLY CHAIN MANAGEMENT ADVICE CENTRE

(PPPFA Regulations Roadshow program)

DATE	MUNICIPALITY	VENUE	TARGET	TIME
09/03/2017	Ephraim Mogale	Municipality	SUPPLIERS	09H00
15/03/2017	Fetakgomo	Mohlaletse Com.	SUPPLIERS	09H00
23/03/2017	Greater Tubatse	Municipality	SUPPLIERS	09H00
29/03/2017	Elias Motsoaledi	Municipality	SUPPLIERS	09H00

For more information please contact Mr Sehale MS at Tel.013 265 1344

4.2.4 VHEMBE SUPPLY CHAIN MANAGEMENT ADVICE CENTRE

(PPPFA Regulations Roadshow Program)

DATE	MUNICIPALITY	VENUE	TARGET	TIME
07/03/2017	Makhado	Makhado Showground	SUPPLIERS	10H00
08/03/2017	Musina	Musina Showground	SUPPLIERS	10H00

For more information please contact Ms Manena A at Tel.015 962 1752

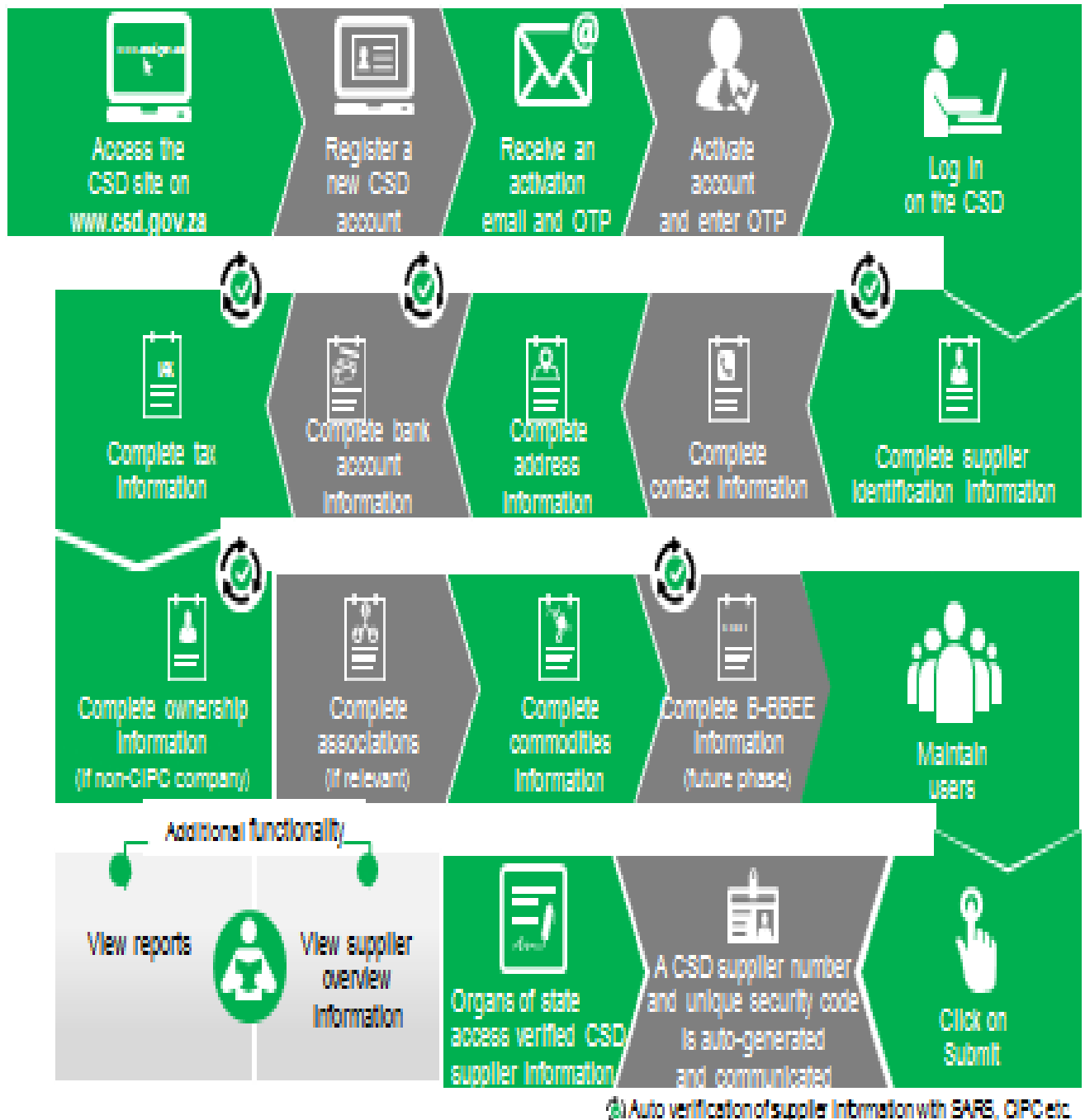
4.2.5 WATERBERG SUPPLY CHAIN MANAGEMENT ADVICE CENTRE

(PPPFA Regulations Roadshow program)

DATE	MUNICIPALITY	VENUE	TARGET	TIME
09/03/2017	Modimolle/Bela-Bela/Mookgophong	Lekkerbreek Primary School	SUPPLIERS	10H00
15/03/2017	Thabazimbi	Northam-Lapa	SUPPLIERS	10H00
16/03/2017	Mogalakwena	Mokopane 1-Community	SUPPLIERS	10H00

For more information please contact Mr Mogoroga PE at Tel.014 717 5837

Supplier Self-Registration Process



ANNEXURE 1: ADDRESS LIST AND CONTACT DETAILS: LIMPOPO PROVINCIAL DEPARTMENTS

UNIQUE REF. NO.	BID DOCUMENT REFERENCE	CONTACT DETAILS	DOCUMENTS SOLD AT:	DOCUMENTS DEPOSITED AT
100	DSDP	Tel: 015 293 6000 Fax: 015 293 6211 Website: www.limpopo.gov.za	Department of Social Development , Office No. 57 Ground Floor, 21 Biccard Street POLOKWANE	Deposited in the box located at Department of Social Development, 21 Biccard Street Polokwane
101	LPT	Tel: 015 298 7000 Fax: 015 295 7010 Website: www.limpopo.gov.za	Provincial Treasury 46 Hans Van Rensburg Street, POLOKWANE and all Provincial Treasury Tender Advice Centres	Deposited in the bid box located outside a guard house at Ismini Towers, 46 Hans Van Rensburg Street, Polokwane
101A	TC/LP	Tel: 015 291 8400 Fax: 015 295 3310 Website: www.limpopo.gov.za	Provincial Treasury 56 – 58 Paul Kruger Street, POLOKWANE and all Provincial Treasury Tender Advice Centres	Deposited in the bid box located in the main entrance, Finance House Building, 56-58 Paul Kruger Street, Polokwane
102	PRDP	Tel: 015 287 6000 Fax: 015 295 3840 Website: www.limpopo.gov.za	Office of the Premier , 40 Hans van Rensburg Street, POLOKWANE and all SCM Advice Centres	Deposited in the bid box located at Mowaneng Building, 40 Hans van Rensburg Street, Polokwane
103	HEDP	Tel: 015 293 6000 Fax: 015 293 6211 Website: www.limpopo.gov.za	Department of Health , Office No. D3 Ground Floor, Old Capricorn Building, 18 College Street, POLOKWANE and all Provincial Treasury Tender Advice Centres	Deposited in the box located at Department of Health and Social Development, 18 College Street, Polokwane
104	LPEDT	Tel: 015 290 7600/1 Fax: 015 297 4494 Website: www.limpopo.gov.za	Department of Education , Corner 113 Biccard and 24 Excelsior Streets, POLOKWANE and all Provincial Treasury Tender Advice Centres	Deposited in the bid box located in the main entrance of corner 113 Biccard Street and Excelsior Street, Polokwane
105	PUDP	Tel: 015 295 1000 Fax: 015 295 1163 Website: www.limpopo.gov.za	Department of Roads & Transport , 40 Paul Kruger Street, POLOKWANE and all Provincial Treasury Tender Advice Centres	Deposited in the bid box located at 1 st Floor, Paul Kruger Wing, 40 Paul Kruger Street, Polokwane
106	DSSL	Tel: 015 290 2900 Fax: 015 291 4452 Website: www.limpopo.gov.za	Department of Safety, Security and Liaison , 32 Schoeman Street, POLOKWANE and all Provincial Treasury Tender Advice Centres	Deposited in the bid box located in the main entrance of 32 Schoeman Street, Polokwane
107	COGHSTA	Tel: 015 294 2000 Fax: 015 295 4190 Website: www.limpopo.gov.za	Department of Co-Operative Governance, Human Settlements & Traditional Affairs , 28 Market Street, Office No. G 74, Ground Floor, Polokwane.	Deposited in the bid box located at Hensa Towers, Cnr of Rabe and Landdros Mare Streets, Polokwane
108	DSAC	Tel: 015 284 4000 Fax: 015 284 4514 Website: www.limpopo.gov.za	Department of Sport, Arts and Culture Olympic Towers, Corner Rabe and Biccard Street, POLOKWANE and all Provincial Treasury Tender Advice Centre	Deposited in the bid box located in the main entrance of Olympic Towers, Corner 21 Rabe and Biccard Street, Polokwane
109	LEDET	Tel: 015 293 8300 Fax: 015 293 8319 Website: www.limpopo.gov.za	Department of Economic Development, Environment & Tourism , 90 Bok Street, POLOKWANE and all SCM Advice Centres	Deposited in the bid box located in the main entrance of Evridiki Towers, 20 Hans Van Rensburg Street, Polokwane
110	LDPW & WODP	Tel: 015 284 7000 Fax: 015 284 7031 Website: www.limpopo.gov.za	Department of Public Works , Works Towers, 43 Church Street, POLOKWANE and all Provincial Treasury Tender Advice Centres	Deposited in the bid box located at Corner Blaawberg and River Street Ladanna Polokwane 0699 Private Bag X9490 Polokwane 0700
111	ACDP	Tel: 015 294 3000/30/60/90/20 Fax: 015 294 4506 Website: www.limpopo.gov.za	Department of Agriculture , Temo Towers, 69 Biccard Street, POLOKWANE and all Provincial Treasury Tender Advice Centres	Deposited in the bid box located in the main entrance of AgriVillage, 69 Biccard Street, Polokwane

ANNEXURE 2: ADDRESS LIST AND CONTACT DETAILS: LIMPOPO PUBLIC ENTITIES

UNIQUE REF. NO.	BID DOCUMENT REFERENCE	CONTACT DETAILS	DOCUMENTS SOLD AT:	DOCUMENTS DEPOSITED AT
112	RFB: LIMP	Tel: 015 293 3621 Fax: 015 293 3660 Website: www.golimpopo.co	State Information Technology Agency (SITA) Limpopo Office, Moolman Building, 27 Market Street, POLOKWANE, 0699	Bid box located in the Main Entrance of Moolman Building, 27 Market Street, Polokwane
113	LTA	Tel: 015 293 3600 Fax: 015 293 3655 Website: www.golimpopo.com	Limpopo Tourism Agency , ERF 92/688, Portion 2 Southern Gateway, Ext 4, N1 Main Road, Polokwane 0699	Bid box located in the offices ERF 92/688, Portion 2 Southern Gateway, Ext 4, N1 Main Road, Polokwane 0699
114	LGB	Tel: 015 295 5581 Fax: 015 295 3566 Website: www.lgb.org	Limpopo Gambling Board , 22 Schoeman Street, POLOKWANE, from 08H30 to 16H00	Bid box located in the main entrance, ground floor, 22 Schoeman Street, Polokwane
115	TIL	Tel: 015 295 5171 Fax: 015 295 5197 Website: www.til.co.za	Trade and Investment Limpopo 130A Marshall Street, POLOKWANE, 0699	Bid box located in the main entrance, ground floor, 130 A Marshall Street, Polokwane
116	LIBSA	Tel: 015 287 3000 Fax: 015 297 6732 Website: www.libsa.co.za	Limpopo Business Support Agency , 06 Platinum Street, Ladine, POLOKWANE, 0700	Bid box located in the main entrance, 06 Platinum Street, Ladine, Polokwane
117	RAL	Tel: 015 284 4600 Fax: 015 284 4701 Website: www.ral.co.za	Road Agency Limpopo (RAL) , RAL Towers, 26 Rabe Street, POLOKWANE, 0700	Bid box located in the entrance foyer (ground floor) of RAL Towers, at 26 Rabe Street, Polokwane
118	LADC	Tel: 015 296 3543 Fax: 015 296 3549 Website: www.limpopo.gov.za	Limpopo Agribusiness Development Corporation , 29 Rhodes Drist Street, Bendor, POLOKWANE, 0699	Bid box located in the main entrance, 29 Rhodes Drist Street, Bendor, Polokwane,
119	GAAL	Tel: 015 288 0122 Fax: 015 288 0346 Website: www.gaal.co.za	Gateway Airports Authority Limited , N1 Road to Louis Trichardt, Army Base, POLOKWANE International Airport, Polokwane, 0700	Bid box located in the main entrance, ground floor of administration building, Polokwane International Airport, Army Base
120	VIVET	Tel: 015 963 3156 Fax: 015 963 3154 Website: www.fetcol@mweb.co.za	Vhembe FET College , Stand No. 203, Unit A, Sibasa, 0970, Limpopo Province	Vhembe Fet College, Central Office, Private Bag X2136, SIBASA 0970

ANNEXURE 3: ADDRESS LIST AND CONTACT DETAILS: PROVINCIAL TREASURY TENDER ADVICE CENTRES

(Tender bulletins and bid documents are obtainable from the following Centers):

PROVINCIAL TREASURY SUPPLY CHAIN MANAGEMENT ADVICE CENTRES	
<p>HEAD OFFICE</p> <p>Provincial Supply Chain Management Office 56 – 58 Paul Kruger Street POLOKWANE Private Bag x9494 POLOKWANE, 0700 Tel No. (015) 291 8400</p> <p>Contact: Ms. M.BRakubu @ Tel: 015 291 8717/6</p>	<p>Capricorn SCM Advice Centre</p> <p>Limpopo Provincial Treasury 56-58 Paul Kruger Street Private Bag x9494 POLOKWANE, 0700 Tel No. (015) 291 8400</p> <p>Contact Person: Ms. M.M. Masindi</p>
<p>Vhembe SCM Advice Centre</p> <p>Limpopo Provincial Treasury Government Building Complex BLOCK E GROUND FLOOR THOHOYANDOU, VENDA Tel: (015) 962 1752 Fax: (015) 962 1282</p> <p>Contact Person: Ms. A Manena</p>	<p>Mopani SCM Advice Centre</p> <p>Limpopo Provincial Treasury Private Bag X 1973 GIYANI, 0826 Tel: (015) 812 0149 Fax: 086 219 7905</p> <p>Contact Person: Mr. M. B. Mbedzi</p>
<p>Waterberg SCM Advice Centre</p> <p>Limpopo Provincial Treasury 98 Nelson Mandela Street Decimale Building MODIMOLLE Tel: (014) 717 5837 Fax: (014) 717 5670</p> <p>Contact Person: Mr. P.E. Mogoroga</p>	<p>Sekhukhune SCM Advice Centre</p> <p>Limpopo Provincial Treasury Lefa Centre, Schoonoord Road JANE FURSE Tel: (013) 265 1344 Fax: (013) 265 1354</p> <p>Contact Person: Mr. M. S. Sehale</p>

ANNEXURE 4: ADDRESS LIST AND CONTACT DETAILS: SATELLITE OFFICES

(Tender bulletins are obtainable from the following centers)

CAPRICORN	VHEMBE	MOPANI	WATERBERG	SEKHUKHUNE
			Libsa Thabazimbi: No.08 Riet Bok Street Tel. No. (014) 772 2437	
			Libsa Lephalale No. 3A Venter Street Tel. No. (014) 763 2834	